



ATTENTION BROKERS  
**FOR LEASE**

## **Farragut Factory Business Park**

55 NE FARRAGUT STREET  
PORTLAND, OR 97060



### **Flex Space Available**

Located in Inner NE Portland  
with Quick Acces to I-5

[FarragutFactory.com](http://FarragutFactory.com)

# Farragut Factory Business Park

55 NE FARRAGUT STREET  
PORTLAND, OR 97060

## PROPERTY OVERVIEW

- Includes one building comprising approximately 33,160 square feet of leasable space.
- The industrial park consists of 14 office and warehouse suites ranging in size from 1,250 square feet to 5,100 square feet
- Fully sprinkled, ample power, parking and water with security lighting.

**Located right off of I-5, it's ideal for businesses that need office, warehouse, storage, or light manufacturing/production space.**



# Industrial Flex Space Available - Inner NE Portland!

**3,433**  
SQUARE FEET

**\$17.25 /yr**  
RENT / SF

**\$4,934.94**  
RENT

(503) 406-2745  
www.FarragutFactory.com



## PROPERTY ADDRESS

55 NE Farragut Street - Suite 07  
Portland, OR 97211

COMMERCIAL TYPE: **Industrial**

LEASE TYPE: **NNN** AVAILABLE: **7/19/24**

## DESCRIPTION

Available from Grid Property Management, LLC:

View the property website here: [www.FarragutFactory.com](http://www.FarragutFactory.com)

Industrial/Retail flex space available for lease in Inner NE Portland.

This suite is located in a two-story mixed-use office/retail and industrial building with a handful of other tenants.

The business park is located at 55 NE Farragut Street right off of N Lombard and MLK Jr. Blvd with close proximity to I-5.

Suite 7 is located on the ground floor of a warehouse style insulated building.

The suite is 3,433 RSF.

Suite has direct access to shared bathrooms, high interior clearance, one (1) rollup door and one standard entry door.

The suite has ample power, ample lighting, and gas heat.

Power: Information Pending

Parking: Tenant shall have the right to park up to 4 vehicles in East lot.

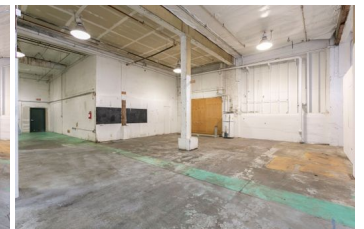
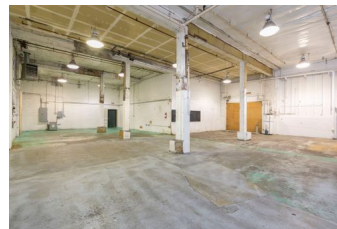
One-year minimum lease. Extensions beyond one year are available.

## AMENITIES

- High Ceiling Clearance Warehouse
- 1 Drive-In Roll Up Door
- Ample Parking

## RENTAL TERMS

Rent	\$4,934.94
Security Deposit	\$6,500.00
Application Fee	\$0.00



View this listing online:



# 2,214 RSF Industrial Flex Space Available - Inner NE Portland!

**2,214**  
SQUARE FEET

**\$18.95 /yr**  
RENT / SF

**\$3,496.28**  
RENT

**(503) 406-2745**  
[www.FarragutFactory.com](http://www.FarragutFactory.com)



PROPERTY ADDRESS

55 NE Farragut Street - Suite 09 & 10  
Portland, OR 97211

LEASE TYPE: **NNN**    AVAILABLE: **Now**

DESCRIPTION

Available from Grid Property Management, LLC:

View the property website here: [www.FarragutFactory.com](http://www.FarragutFactory.com)

Industrial/Retail flex space available for lease in Inner NE Portland.

This suite is located in a two-story mixed-use office/retail and industrial building with a handful of other tenants.

The business park is located at 55 NE Farragut Street right off of N Lombard and MLK Jr. Blvd with close proximity to I-5.

Suite 9 and 10 is located on the ground floor of a warehouse-style insulated building.

The suite is 2,214 RSF.

The suite has direct access to shared bathrooms, high interior clearance, two (2) roll-up doors and two standard entry doors.

The suite has ample power, ample lighting, and gas heat.

Power: Information Pending

One-year minimum lease. Extensions beyond one year are available.

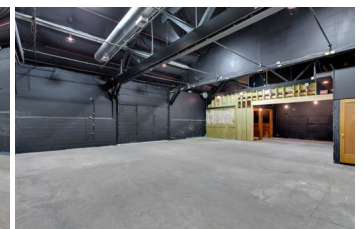
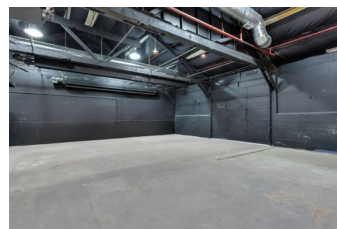
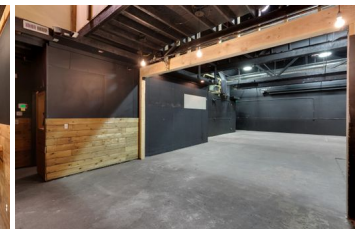
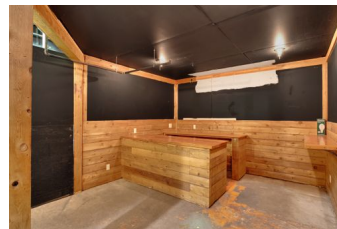
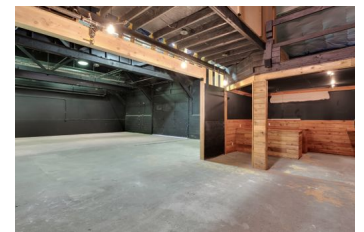
The first-year base rent rate is \$14.45 per year per square foot (\$2,666.03 per month), plus \$4.50 per year per square foot pro-rata allocation of triple net (NNN) costs (\$1,287.38), resulting in

AMENITIES

- High Ceiling Clearance
- 2 Roll Up Doors
- Warehouse
- Ample Parking

RENTAL TERMS

Rent	\$3,496.28
Security Deposit	\$4,000.00
Application Fee	\$0.00



# Farragut Factory Business Park

55 NE FARRAGUT STREET  
PORTLAND, OR 97060

FLEX SPACE AVAILABLE  
LOCATED IN INNER NE PORTLAND

**Is your client the perfect fit?  
Let's talk today.**

LeasingTeam@GridPropertyManagement.com  
503-406-2745

Individual suite information is available at  
FarragutFactory.com



Grid Property Management is a property management firm that specializes in the management of commercial and industrial properties.